



USER MANUAL

Version 1.0

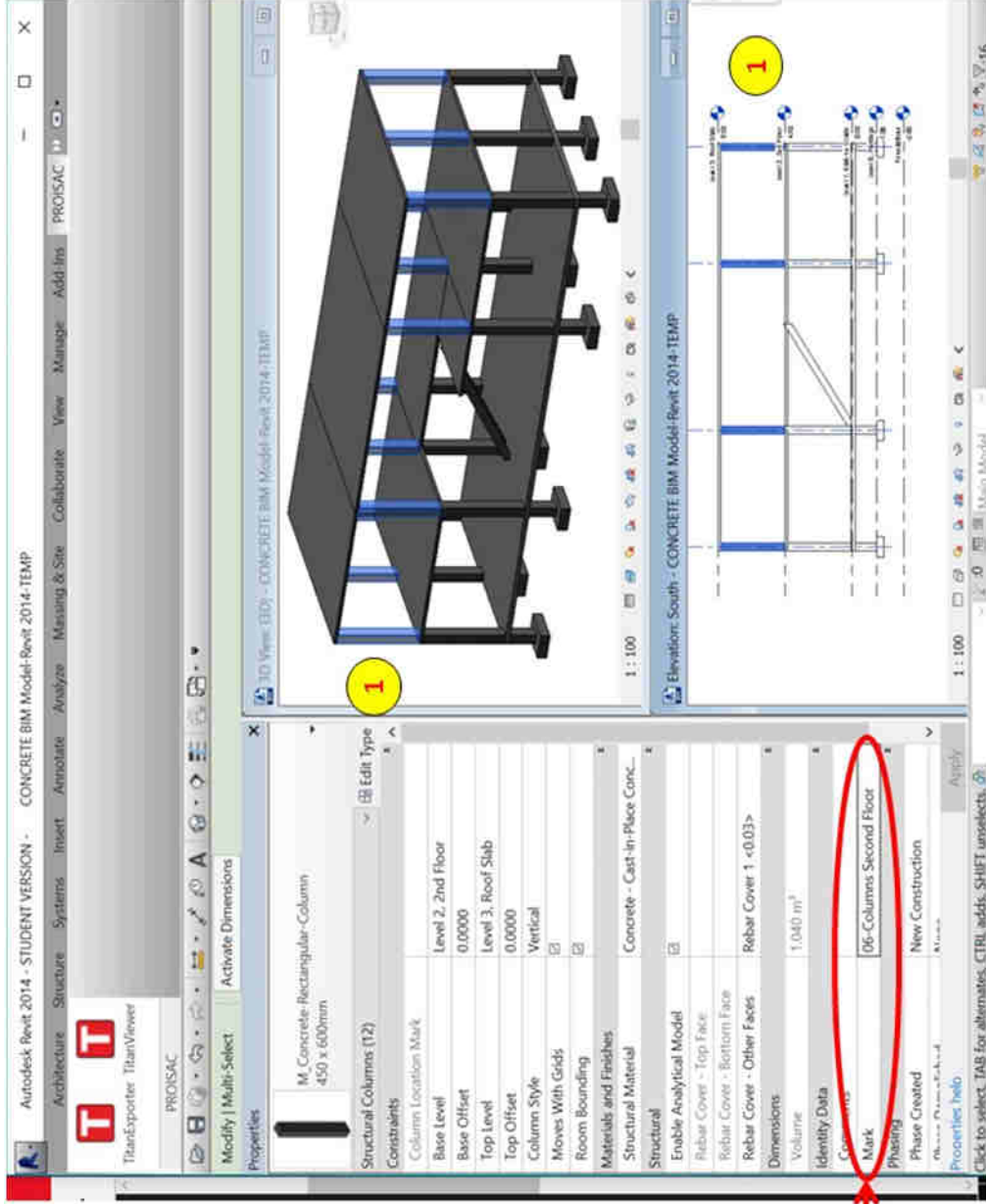
2015 Prometheus Ingenieros SAC

<http://www.proisac.com>

<http://titan.proisac.com>

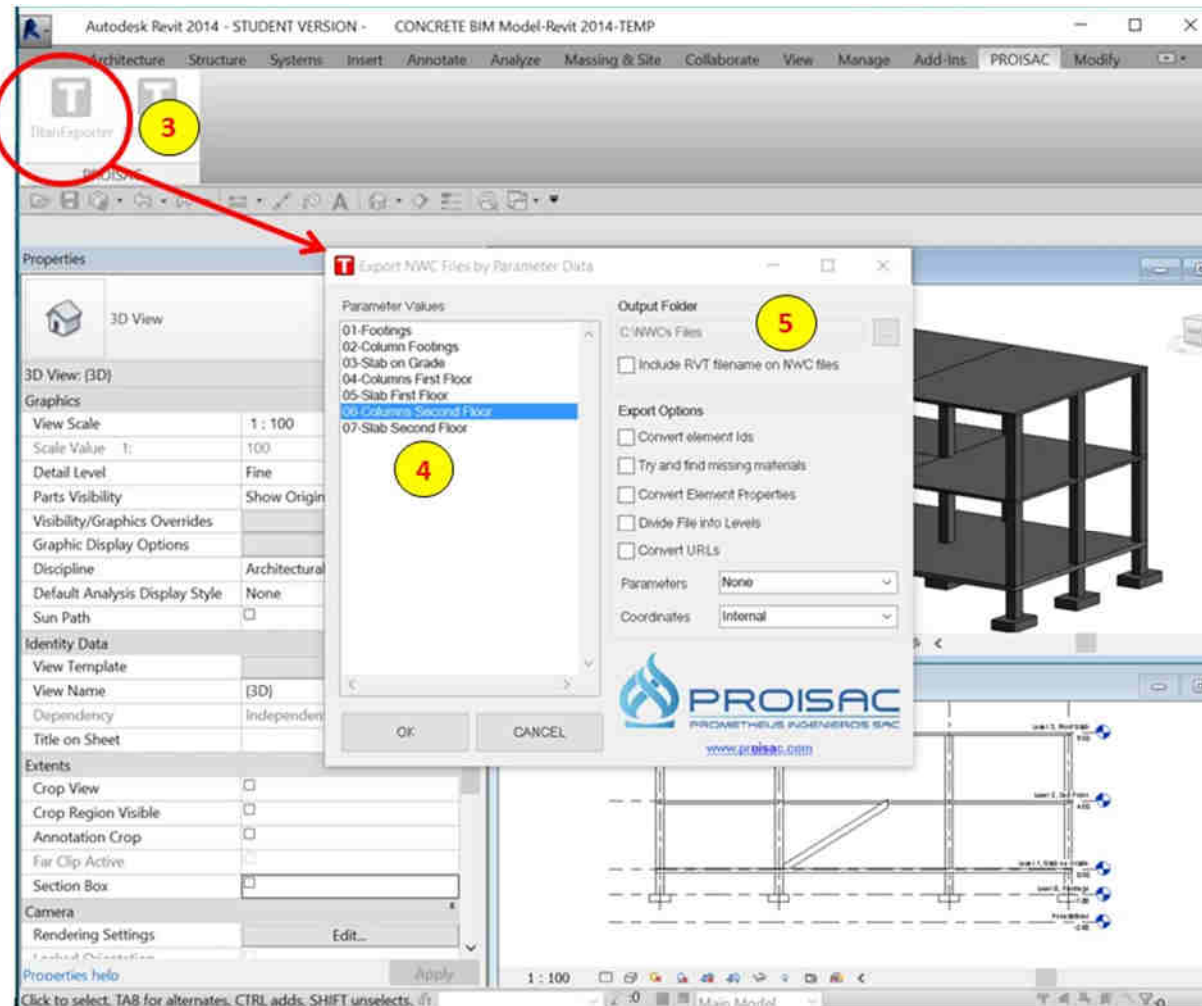
2 Define a name for the group of selected elements and fill the value of the “Mark” parameter on the Revit properties dialog box with that name.

For example:



1 Select the elements on your existing Revit model that you want to be grouped under any desired customized criteria (e.g., by location, discipline, contractor, family, category, etc.).

3 Click on the TitanExporter Icon to open the TitanBIM exporter dialog box.



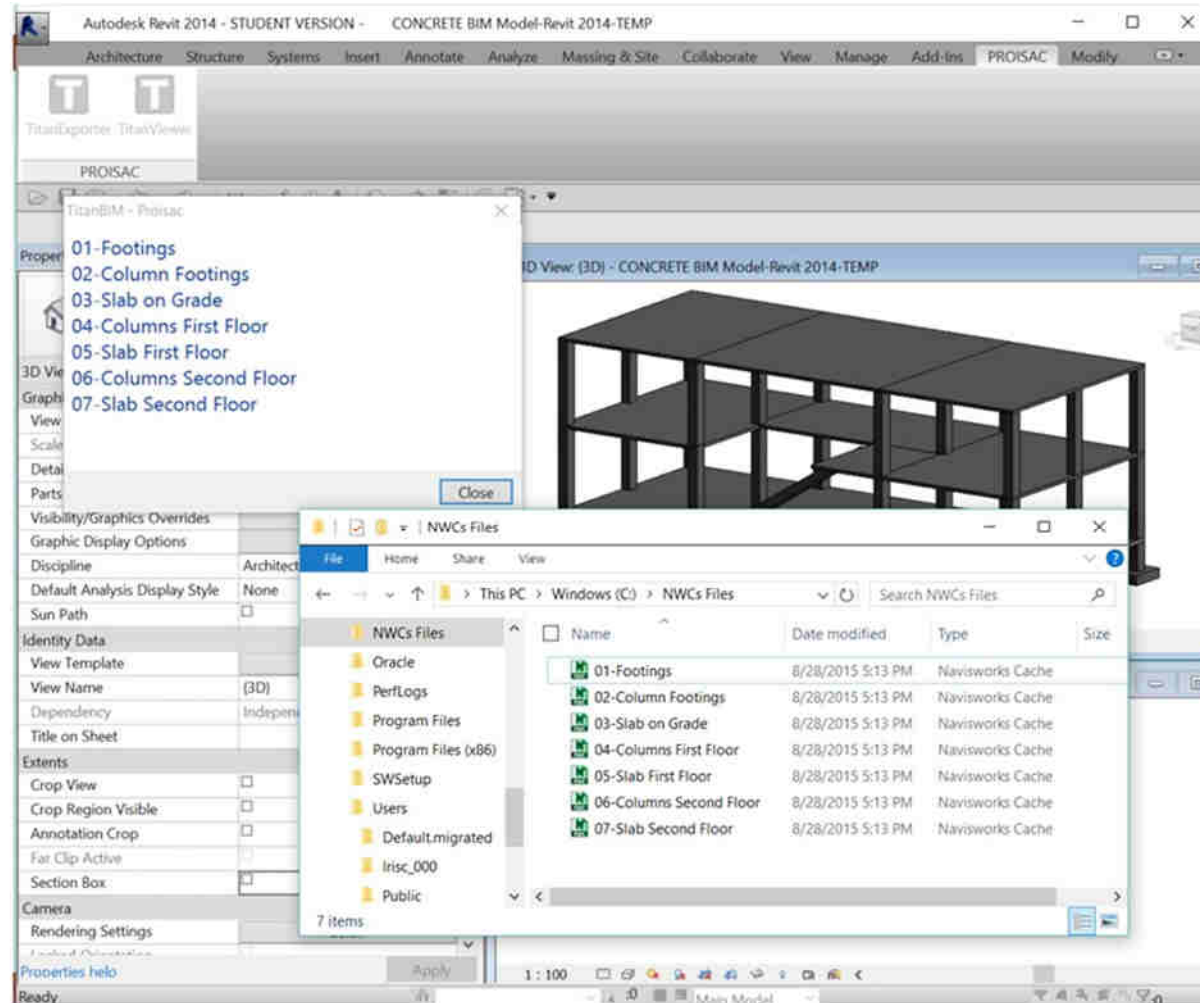
On the TitanBIM exporter dialog box:

4 Select a Parameter value(s). The elements grouped under the selected parameter(s) will be grouped into a NWC file(s).

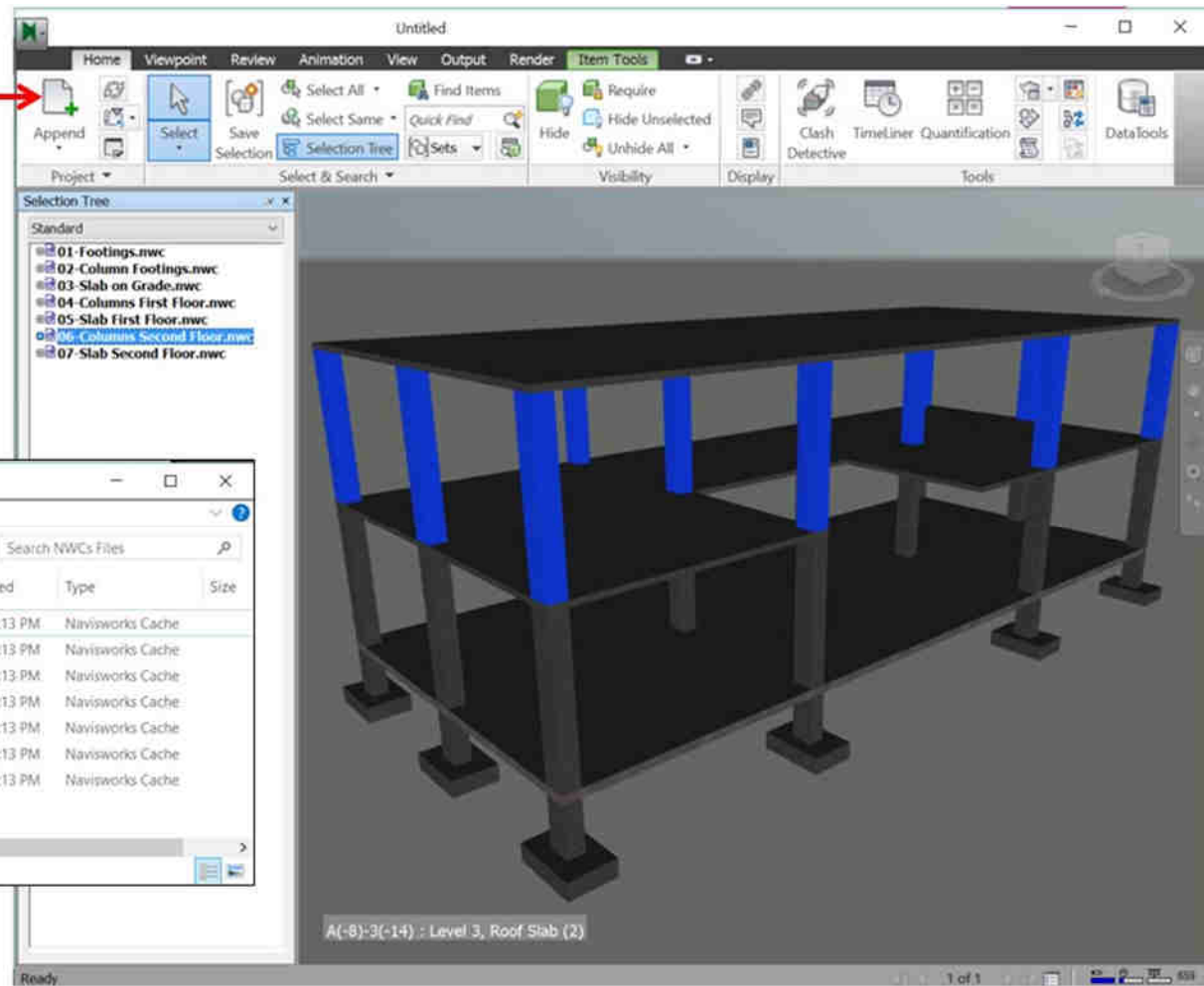
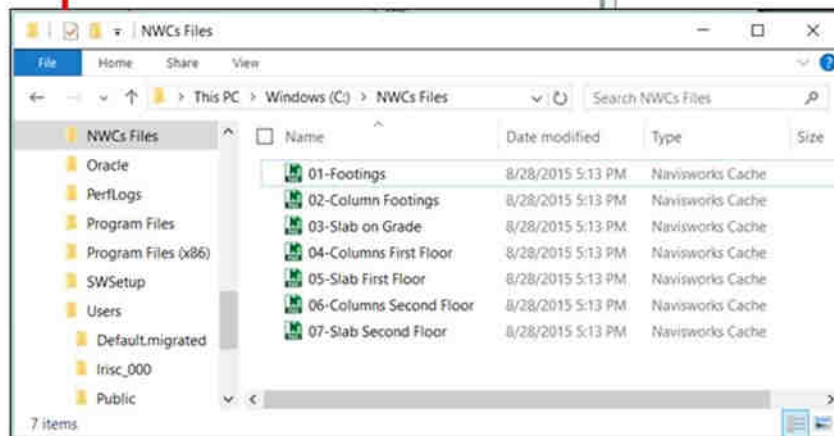
5 Select the Output Folder where the NWC file(s) will be created and click on OK.



The TitanExporter will create one NWC file for every value of the parameter Mark selected on the TitanBIM exporter dialog box:



6 Append into Navisworks the NWC files created with Titan BIM



Use the TitanViewer if you want to review visually which elements are grouped under each value of the Mark parameter before using the TitanExporter.

